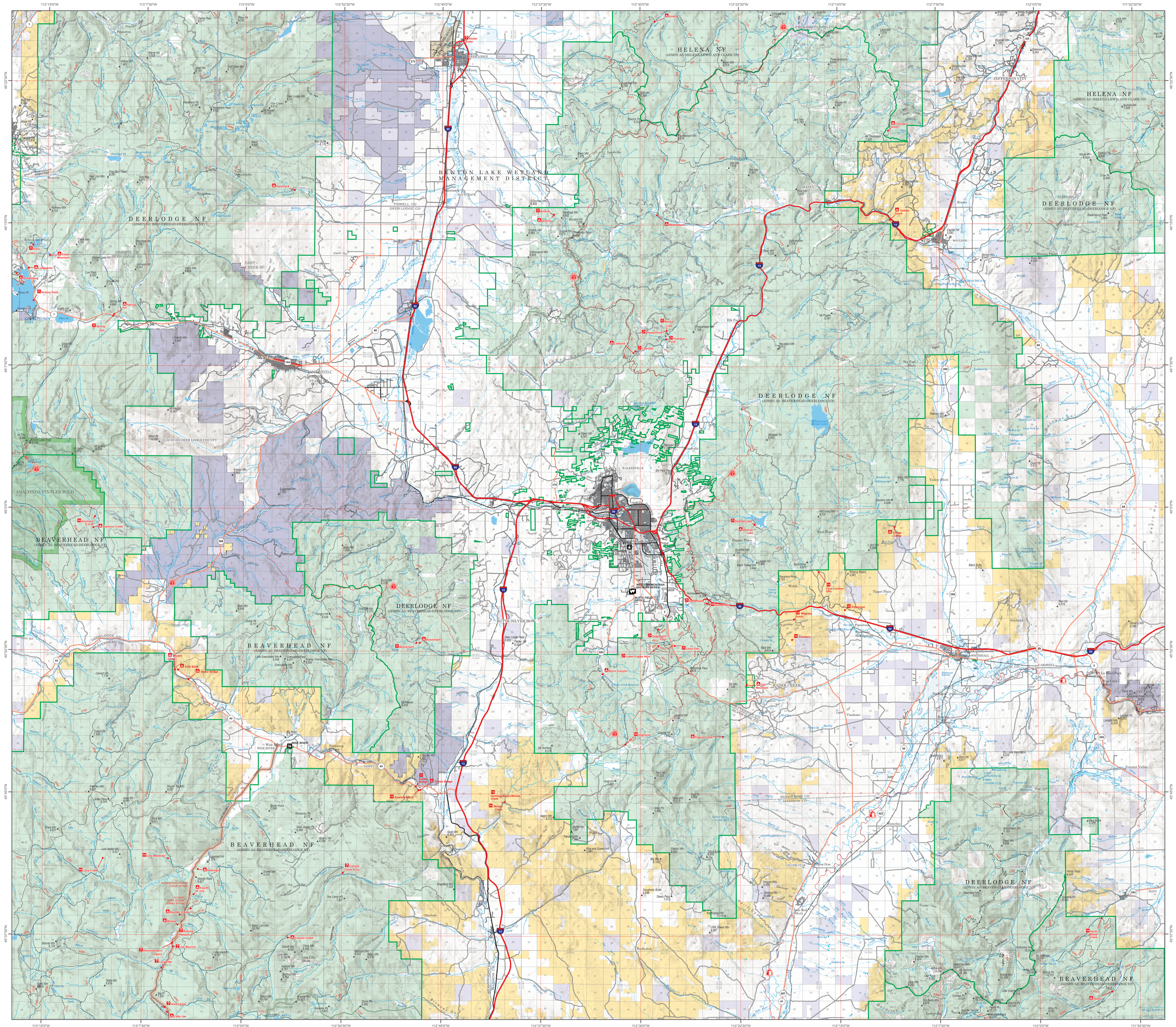
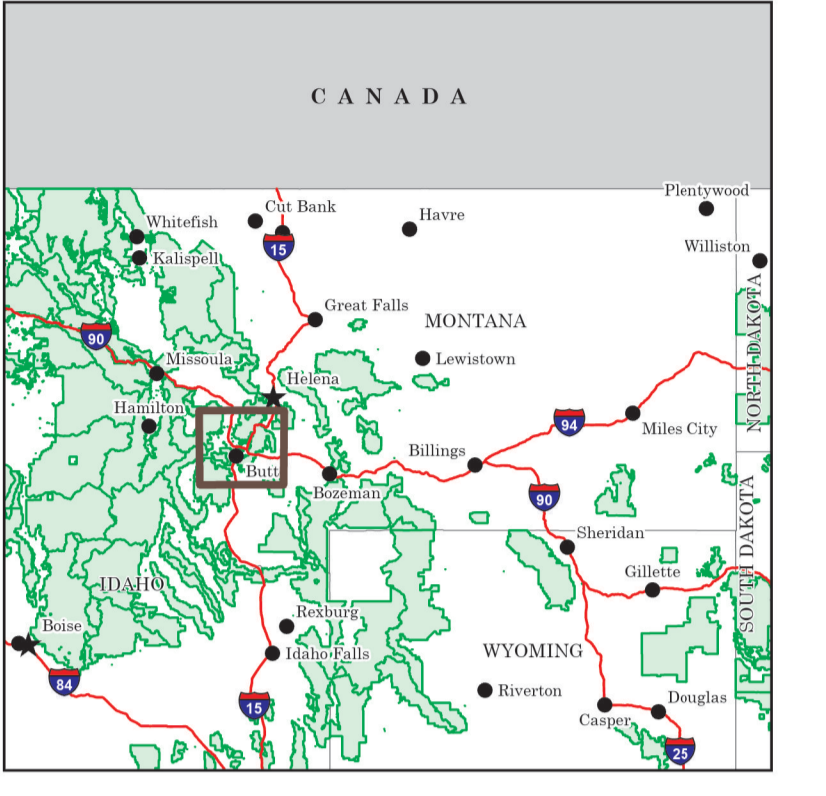
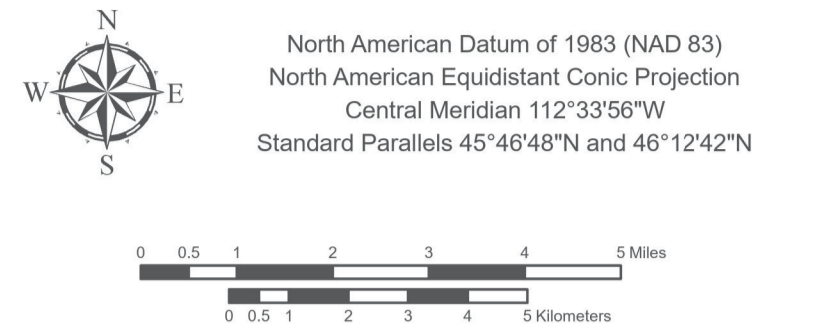


Butte Ranger District

Beaverhead-Deerlodge National Forest

Scale 1:126,720



LEGEND

FEDERAL BOUNDARIES

- Proposed National Forest
- Administrative National Forest
- Forest Service Ranger District
- National Park Service
- U.S. Fish & Wildlife Service

ROADS

- Primary Highway
- Secondary Highway
- Paved Road
- Gravel Road
- Old Road
- High Clearance

ROAD SHIELDS/NUMBER

- Interstate U.S. State County BIA Forest Road
- Ferry
- Railroad
- Byway or Backway

OTHER DESIGNATIONS

- DDO American Other Wild and Indian Boundary Research/Plural Areas
- LAND OWNERSHIP
- USFS USFS BLM NPS USFWS Other
- Alaska Tribal State Other Native

TOWNSHIP AND RANGE

- Township/Range
- Section Line - Surveyed
- Section Line - Protocols/Unsurveyed

FEDERAL OFFICES

- Fire District or Fire Charge Supervisor's
- District
- Zone
- Subzone

RECREATION

- Compass
- Picnic Table
- Trail Cabin
- Entrance
- Station
- Viewing Platform
- Interpretive Sign
- Historic Site
- Scenic Overlook
- Trail
- Trail Junction
- Trail Mileage
- Trailhead
- Trail Loop
- Trail Loop Junction
- Trail Loop End
- Trail Loop Start
- Trail Loop Junction
- Trail Loop End
- Trail Loop Start

WATERBODIES

- Perennial Stream, Canal, or Pipeline
- Intermittent Stream
- Rapids or Waterfall
- Underground Pipeline, Aqueduct, Tunnel
- Soak Pit
- Dam / Weir
- Levee
- Gate Lock Chamber, Nonarthen Shore

WATER POINTS

- Wetland
- Spring
- Skid
- Well
- Rapids
- Seep
- Risk
- Gaging Station

WATER LINES

- Perennial Stream, Canal, or Pipeline
- Intermittent Stream
- Rapids or Waterfall
- Underground Pipeline, Aqueduct, Tunnel
- Soak Pit
- Dam / Weir
- Levee
- Gate Lock Chamber, Nonarthen Shore

MOTOR VEHICLE USE MAP (MVUM)

This is not a legal document. Public lands are subject to change and leasing, and may have access restrictions. Not all roads and trails on this map are open to motor vehicle use. Check with appropriate officials and obtain appropriate regulatory maps and information. Obtain permission before entering private lands.

The USDA Forest Service uses the most current and complete data available. GIS data and product accuracy may vary. Using GIS products for purposes other than those for which they were intended may yield inaccurate or misleading results.

USDA is an equal opportunity provider, employer, and lender.